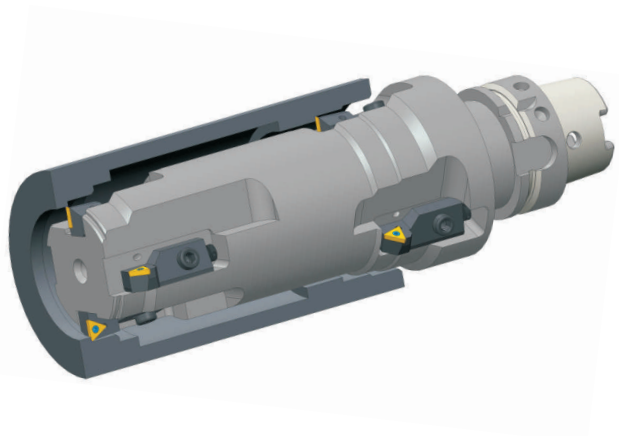







Product Overview

BILZ

Member of the LEITZ Group

for perfect connections



<p>Shrink Units</p> 	<p>ISG 2200 (dia 3 - 20mm)</p> <p>ISG 2400 series (dia 3 - 20mm)</p> <p>ISG 3400 series (dia 3 - 50mm)</p> <ul style="list-style-type: none"> • Starter • All Rounder • Professional 	<ul style="list-style-type: none"> ✓ Suitable for both Carbide and HSS tools ✓ Highest clamping force and concentricity ✓ Available in both air and water cooled ✓ Maximum shrinking time for holders is 5 seconds ✓ Easy and secure handling ✓ Processor controlled high frequency generator ✓ Fully automatic shrinking & cooling processes ✓ Operator independent and safe function ✓ Optimal protection between coil & shank ✓ Long tool life through carefully chosen procedures & materials
<p>Shrink Holders</p> 	<p>Clamping (dia 3 - 50mm)</p> <p>Steep Tapers - 30, 40, 50</p> <p>SK / BT / CAT / Capto</p> <p>HSK Tapers - 32, 40, 50, 63, 80, 100</p> <p>Forms - A / C / E / F</p>	<ul style="list-style-type: none"> ✓ Highest quality standards to attain best concentricity < 0.003mm ✓ Patented cylindrical counter bore for easy tool insertion in cold condition ✓ Optimum taper angle of the chuck nose for better contact cooling ✓ Excellent ratio of flexural strength to dimension ✓ High quality steel for high temperature stability and tool life ✓ Balanced by design and further fine balanced to control vibrations ✓ Geometry to DIN standard 69882-8 ✓ JetSleeve® shrink holders - the solution for milling tasks
<p>Tapping Chucks</p> 	<p>Tapping Range - M3 - M48</p> <p>WFLC WFLK WFLP GNCK TA DSPL WFSL</p> <p>Available in all tapers as per DIN</p>	<ul style="list-style-type: none"> ✓ Quick change tapping system ✓ Chuck with axial length compensation & through coolant facility up to 50 bar pressure ✓ Chuck with axial length compensation ✓ Chuck with axial compensation & radial compensation (Float) ✓ High speed CNC self reversing tapping systems for CNC machines ✓ Reversible tapping system for radial drilling machines ✓ Universal tapping system with axial, radial length compensation & built in safety clutch
<p>Tapping Adaptors</p> 	<p>Tapping Range - M3 - M48</p> <p>WE WEN WES WESN WESN - VL</p>	<ul style="list-style-type: none"> ✓ Quick change tapping adaptors ✓ Standard tapping adaptor ✓ Tapping adaptor with axial length adjustment ✓ Tapping adaptor with safety clutch ✓ Tapping adaptor with safety clutch & axial length adjustment ✓ Tapping adaptor with safety clutch & axial length adjustment with extended length upto 160 mm
<p>Synchro Chucks</p> 	<p>Tapping range - Size 1 - M 3.5 to M14 Size 2 - M 3.5 to M30</p> <p>Steep Tapers - BT40 & BT50</p> <p>HSK - A63 & A100</p> <p>Modular shank - MS 25</p>	<ul style="list-style-type: none"> ✓ Integrated and Modular design ✓ Built in Axial length compensation of +/- 0.150 mm contributes higher tool life ✓ Robust Integrated design ensures stability during tapping ✓ Internal coolant feed up to 50 bar ✓ Suitable with standard available ER type tapping collets ✓ Facilitates better thread quality, higher tap life, avoids tap breakages, low spindle maintenance

<p>GNCN - GNCK</p> 	<p>Tapping range - M3 - M20</p> <p>Sizes - GNCN6C/GNCK6C- ESX12 GNCN12C/GNCK12C- ESX16 GNCN20C/GNCK20C- ESX25</p>	<ul style="list-style-type: none"> ✓ Self reversible hi-speed tapping chuck ✓ Reduction in cycle time ✓ Increase in tool Life ✓ Low spindle maintenance ✓ Good surface finish on threads ✓ Huge power saving ✓ ROI as early as 90 days
<p>Microbore</p> 	<p>Rough boring range (Dia 28 to 1015mm)</p> <p>Fine boring range (Dia 8 to 390 mm)</p> <p>Special boring solutions</p>	<ul style="list-style-type: none"> ✓ Modular system with MF (Modflex system) interchangeable with ABS - Komet ✓ Cartridges are all as per ISO standard ✓ Boring head & cartridge angular serrations facilitates high clamping force ✓ Step boring facilitates high material removal ✓ Microbore unique worm & worm wheel adjustment facilitates fine adjustments up to 0.002mm ✓ Fine boring unit spring loaded feature facilitates better repeatability on bore tolerances ✓ Custom made, special & combination boring bars are also manufactured
<p>CNC Holders</p> 	<p>Steep tapers Size - 30, 40, 50 Tapers - BT, SK, HSK Sizes - 32, 40, 50, 63, 80,100 Types - A, C, E, F Collet Chuck Holders, Side Lock Holders, Face / Shell Mill holders, Morse Taper holders, Boring Bar Blanks, Specials</p>	<ul style="list-style-type: none"> ✓ Taper accuracy meets AT3 standards ✓ OD to ID of the holders are maintained within 0.003 mm ✓ Thread finish maintained to 4g tolerances ✓ Surface finish maintained to Ra 0.25 ✓ Material used are high tensile case hardened and stabilized ✓ All holders are design balanced and fine balanced to the standards ✓ Holders are facilitated with both AD/B coolant facility ✓ All Collet chuck holders are balanced to G6.3 @ 20,000 rpm (BT / SK - 50's - G6.3 @ 12,000 rpm) ✓ All Side lock holders are designed balanced to G6.3 @ 8,000 rpm ✓ All Face & Shell mill holders are designed balanced to G6.3 @ 12,000 rpm
<p>CNC Accessories</p> 	<p>Pull studs</p> <p>HSK coolant pipes Collets (ER11,16,20,25,32,40)</p> <p>Tap collets (ER 16,20,25,32,40)</p> <p>Spanner, Wrench Sealing disc</p>	<ul style="list-style-type: none"> ✓ Available with coolant & non through coolant facility ✓ Assembled with special 'O' rings ✓ Available in standard, Ultra precision also with sealed for through coolant facility ✓ Available with standard shank & square as per Tap's DIN / ISO standards ✓ As per DIN standards
<p>VDI Tool Holders</p> 	<p>DIN 69880</p> <p>Sizes - 16,20,30,40,50,60</p> <p>Forms - A1, A2, B1, B2, B3,B4, B5, B6, B7, B8, C1, C2, C3, C4, D1, D2, E1, E2, E4, F, Y, Z</p>	<ul style="list-style-type: none"> ✓ VDI tool holders meets to DIN 69880 standard ✓ High quality C 45 steel and case hardened steel are used ✓ Good surface finish and better gripping due to high quality grinding at the serrations

<p>Hi-Power Milling Chuck</p> 	<p>Clamping Range (dia 6 - 32mm)</p> <p>Steep Tapers - BT / SK - 30, 40, 50</p> <p>HSK Tapers - A63 & A100</p>	<ul style="list-style-type: none"> ✓ Very high clamping force ✓ Special Roller bearing design provides high frictional resistance ✓ Run out accuracy within 5 micron @ 3D ✓ Perfect sealing mechanism of clamping nut prevents dust and coolant entry ✓ Protective Anti corrosive coating
<p>Slim Version Hi-Power Milling Chuck</p> 	<p>Clamping Range (dia 6 - 20mm)</p> <p>Steep Tapers - BT / SK - 30, 40, 50</p> <p>HSK Tapers - A63 & A100</p>	<ul style="list-style-type: none"> ✓ Slim design helps to reach depth without fouling ✓ Powerful and Rigid ✓ Clamping torque is twice that of ER holders ✓ Run-out consistency within 5 micron @ 4D ✓ Friction spanner ✓ Clamping nut without slots makes its usage at higher rpm effortless
<p>Hydraulic Chuck</p> 	<p>Steep Tapers - BT - 30, 40, 50</p> <p>SK - 40, 50</p> <p>HSK Tapers - A type - 40, 50, 63, 100 C type - 40, 50 E type - 40, 50</p> <p>Sleeves (dia 3 - 25mm)</p>	<ul style="list-style-type: none"> ✓ Proven design and manufacturing standards to achieve better concentricity ✓ Balanced and also fine balanced as per customer requirement ✓ Better clamping force & sustainability ✓ Taper standards to meet AT3 class
<p>TAPS</p> 	<p>Catalog Standard:</p> <p>Size: M4 onwards</p> <p>Length: 50-200 mm DIN / JIS Standard & Specials Taps</p>	<ul style="list-style-type: none"> ✓ Spiral Flute, Straight Flute & Spiral point Taps ✓ Specials Taps on request ✓ UNF / UNC Taps ✓ ISO standards ✓ Coating: Uncoated, TiN, TiCN & TiAlN ✓ Left Hand Taps ✓ Internal Coolant Taps ✓ Thread tolerance - 4H, 5H, 6H, 6HX, 7H, 8H, 7G, 8G, 1B, 2B, 3B

Note:- Please refer our detailed catalogue or contact us for further details / information or visit us @ www.bilzindia.com

